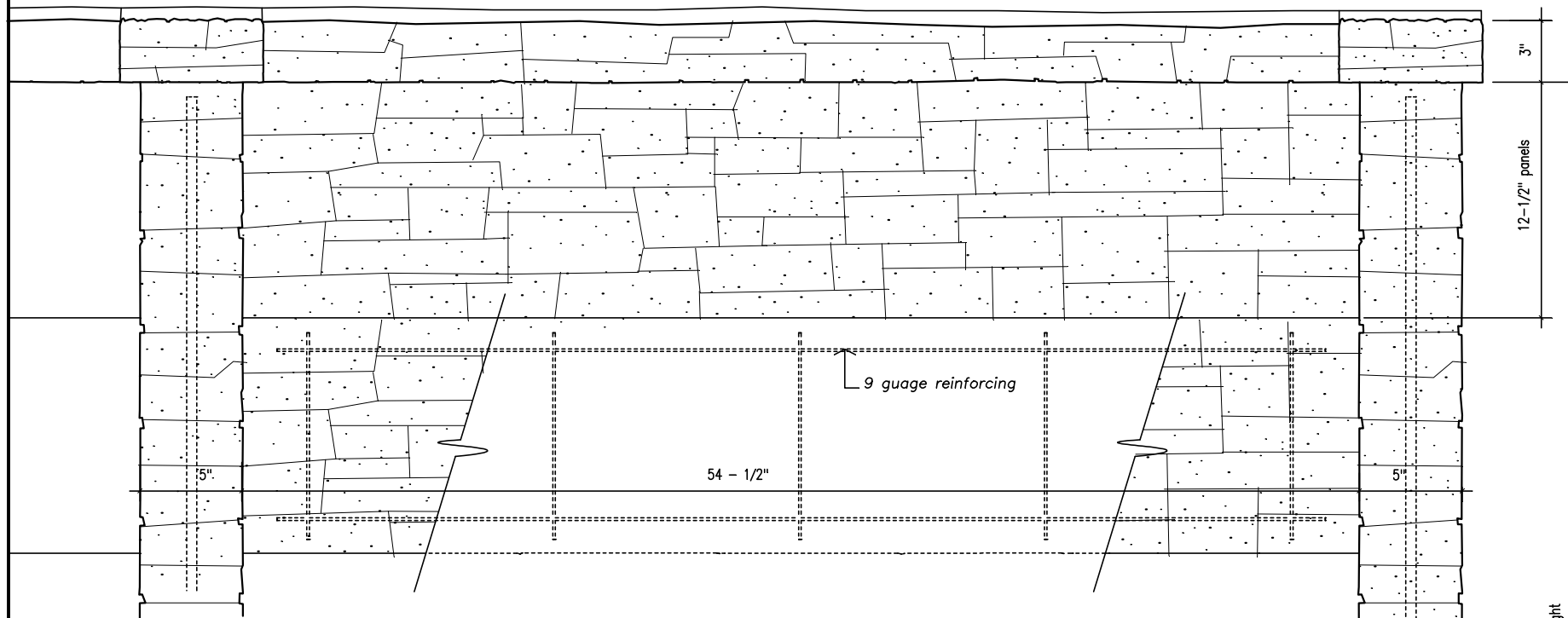




FENCECRETE AMERICA, INC.

manufacturers of precast concrete fencing and masonry wall systems
 15089 tradesmen drive san antonio, texas 78249 210-492-7911 800-229-7811 www.fencecrete.com



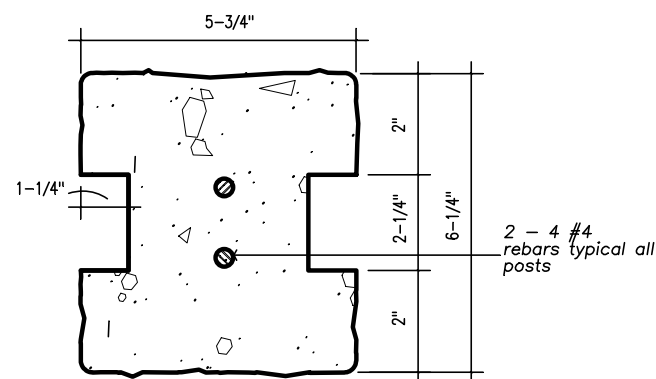
Partial Fence Elevation

scale: 1-1/2" = 1'-0"



Ledgestone Style Concrete Fence

footing: 18" diameter, 24" deep (min.)
 3000 p.s.i. concrete, varies according to local soil conditions



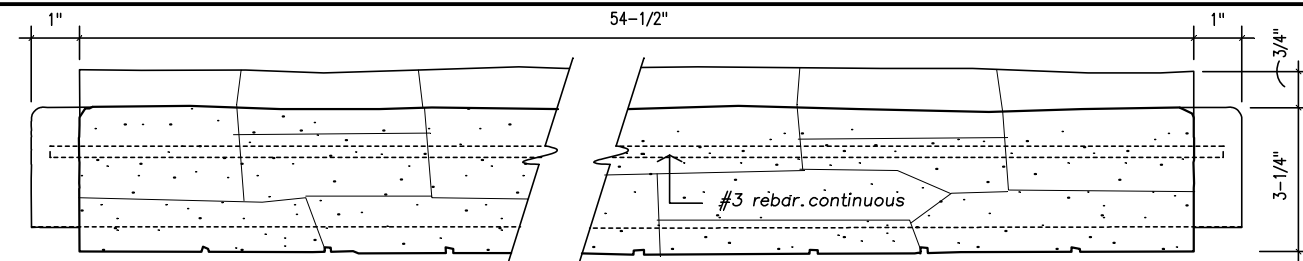
Running Post Section

scale: 3" = 1'-0"

2 - 4 #4 rebars typical all posts

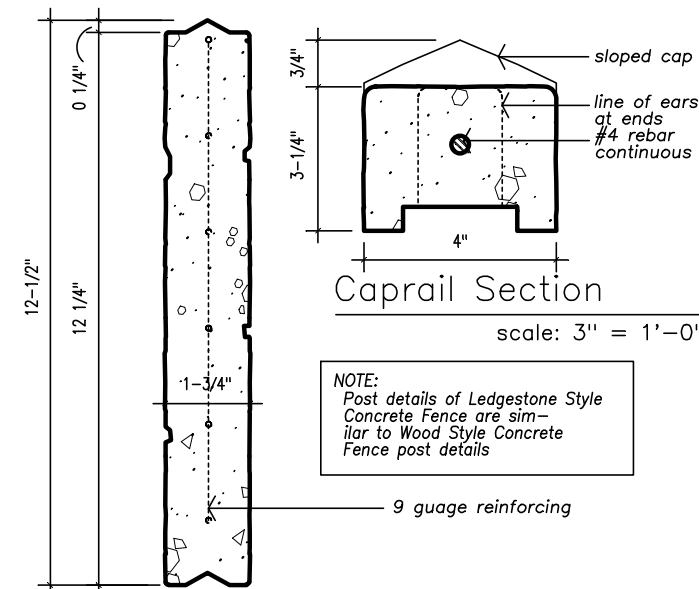
119-1/4" maximum height

2'-0" (min.)



Caprail Elevation

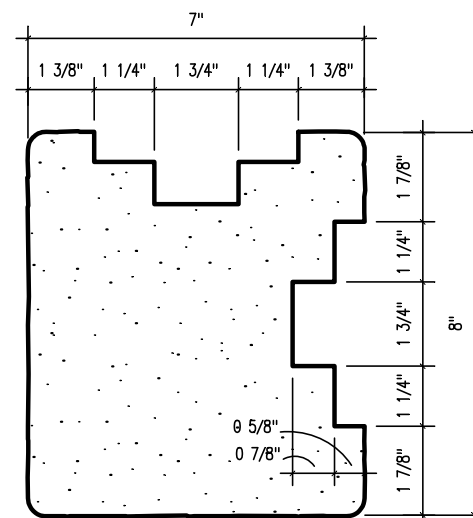
scale: 3" = 1'-0"



Typical Panel Section

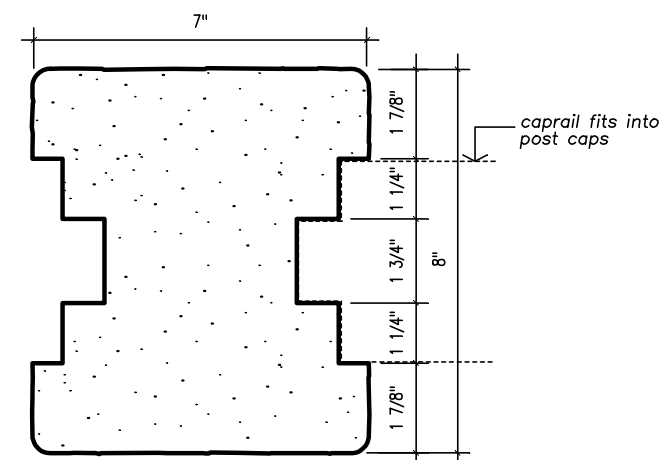
scale: 3" = 1'-0"

NOTE:
 Post details of Ledgestone Style Concrete Fence are similar to Wood Style Concrete Fence post details



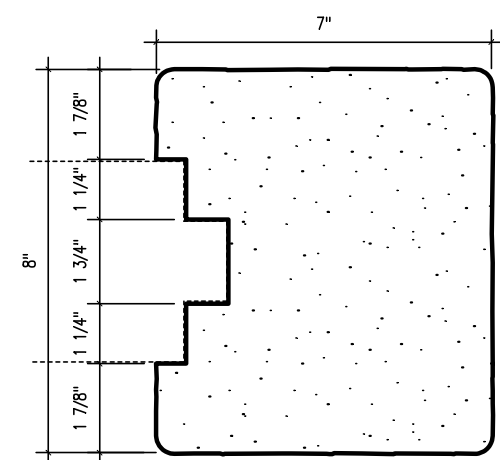
Corner Post Cap

scale: 3" = 1'-0"



Running Post Cap

scale: 3" = 1'-0"



Stop Post Cap

scale: 3" = 1'-0"

notes:

1. The column height can be from 0 to a maximum of 10'-0" - with 8'-0" above grade.
2. All concrete shall be 5000 p.s.i.
3. All reinforcement shall be A.S.T.M. 615 grade 60. Special reinforcement is available upon special order.
4. Footing - 2 feet deep (min.) footing standard per column, 12" - 18" diameter. Depth and diameter can vary per local soil conditions.
5. Texture: All exposed sides have rock-like texture.
6. Gates: Shall have additional steel supports adjacent to concrete columns.
7. All steel reinforcement is prewelded with steel spacers so as to allow for maximum concrete coverage.
8. A special silicone sealant is used to lock the caprail and post caps in place. This sealant requires special tools for removal.

We reserve the right to alter the design or specifications without incurring any obligation, all rights reserved.
 Fencecrete America, Inc.