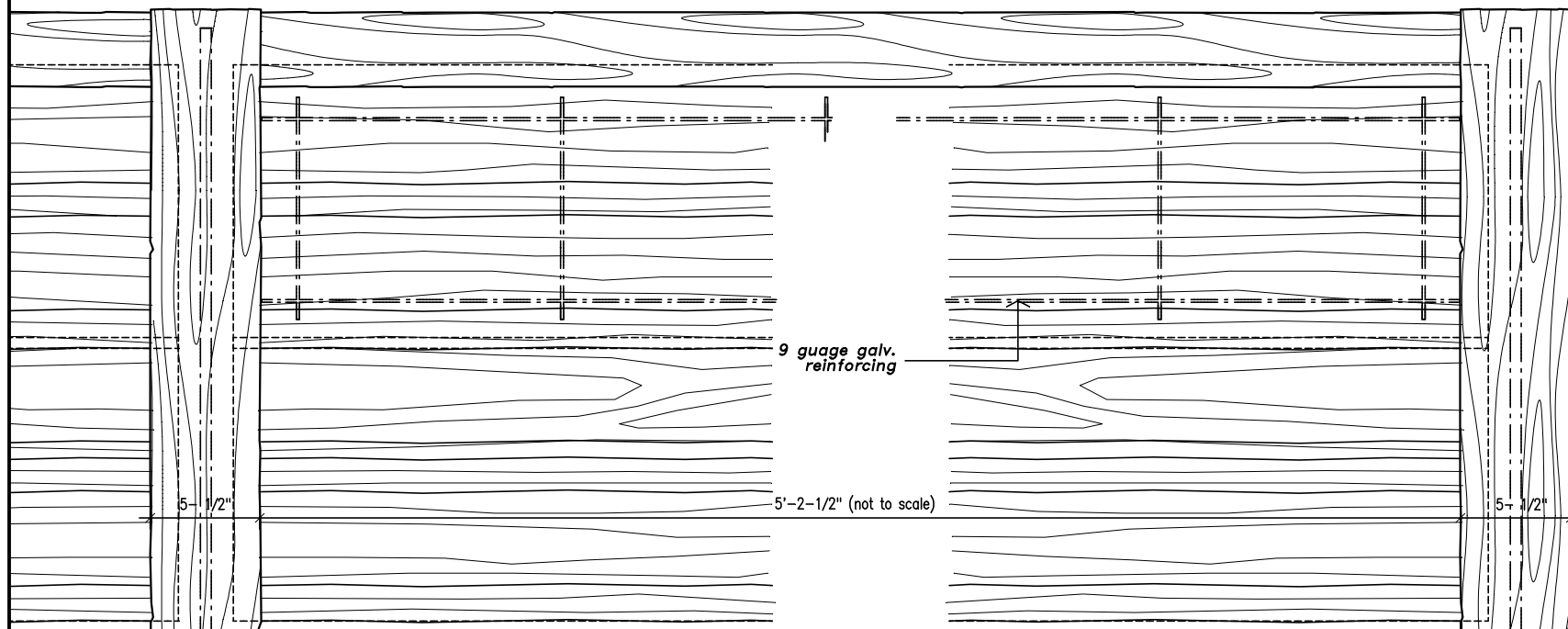




FENCECRETE AMERICA, INC.

manufacturers of precast concrete fencing and masonry wall systems
 15089 tradesmen drive san antonio, texas 78249 210-492-7911 800-229-7811 www.fencecrete.com



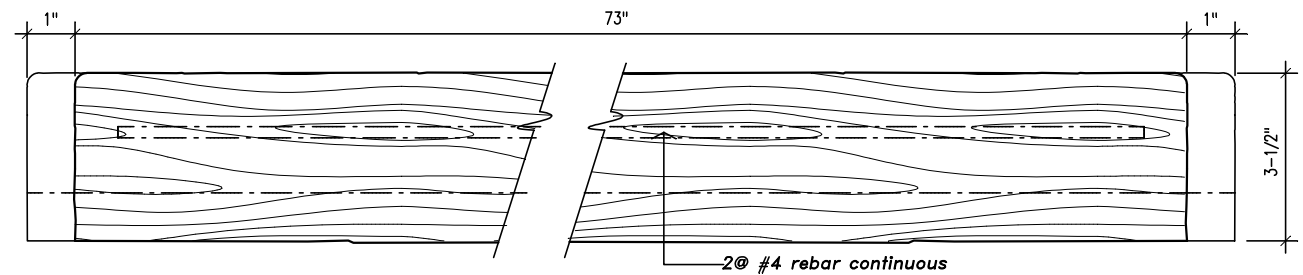
Partial Fence Elevation

scale: 1-1/2" = 1'-0"



Horizontal Board and Batten Style Concrete Fence

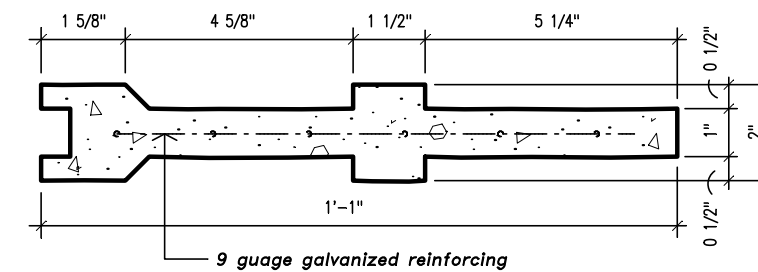
footing: 18" diameter, 24" deep (min.)
 3000 p.s.i. concrete, varies according to local soil conditions



Caprail Elevation

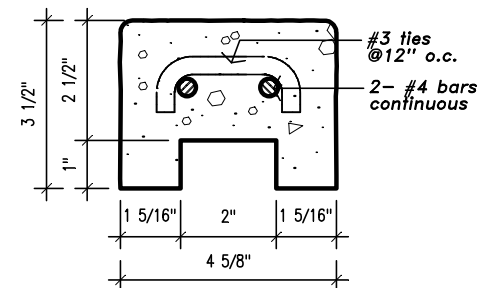
front view

scale: 3" = 1'-0"



Typical Panel Section

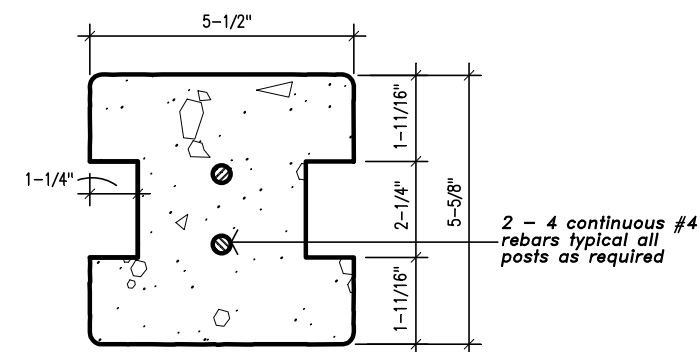
scale: 3" = 1'-0"



Caprail Section

scale: 3" = 1'-0"

8'-0" maximum height



Running Post Section

scale: 3" = 1'-0"

NOTE:
 Details of additional fence post conditions are similar to those shown on the Wood Style Concrete Fence detail sheet.

notes:

1. Maximum fence height on horizontal panel fences is 10'-0".
2. All concrete shall be 5000 p.s.i.
3. All reinforcement shall be A.S.T.M. 615 grade 60. Special reinforcement is available upon special order.
4. Footing - 2 feet deep (min.) footing standard per column, 12" - 18" diameter. Depth and diameter can vary per local soil conditions.
5. Texture: All exposed sides have heavy wood-grained texture.
6. Gates: Shall have additional steel supports adjacent to concrete columns.
7. All steel reinforcement is prewelded with steel spacers so as to allow for maximum concrete coverage.
8. A special silicone sealant is used to lock the caprail in place. This sealant requires special tools for removal.

We reserve the right to alter the design or specifications without incurring any obligation, all rights reserved.
 Fencecrete America, Inc.