

**SPLIT-FACE**

**Fencecrete  
America** Inc.  
**PRECAST CONCRETE FENCING AND WALL SYSTEMS**

**CMU BLOCK**

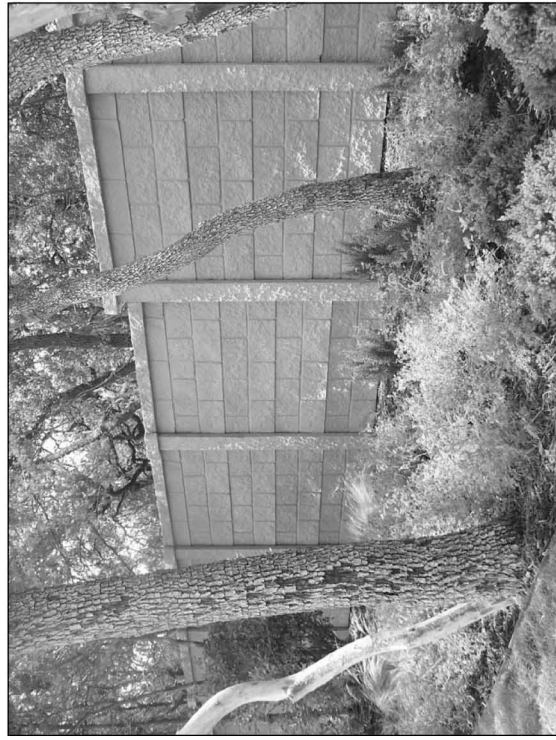
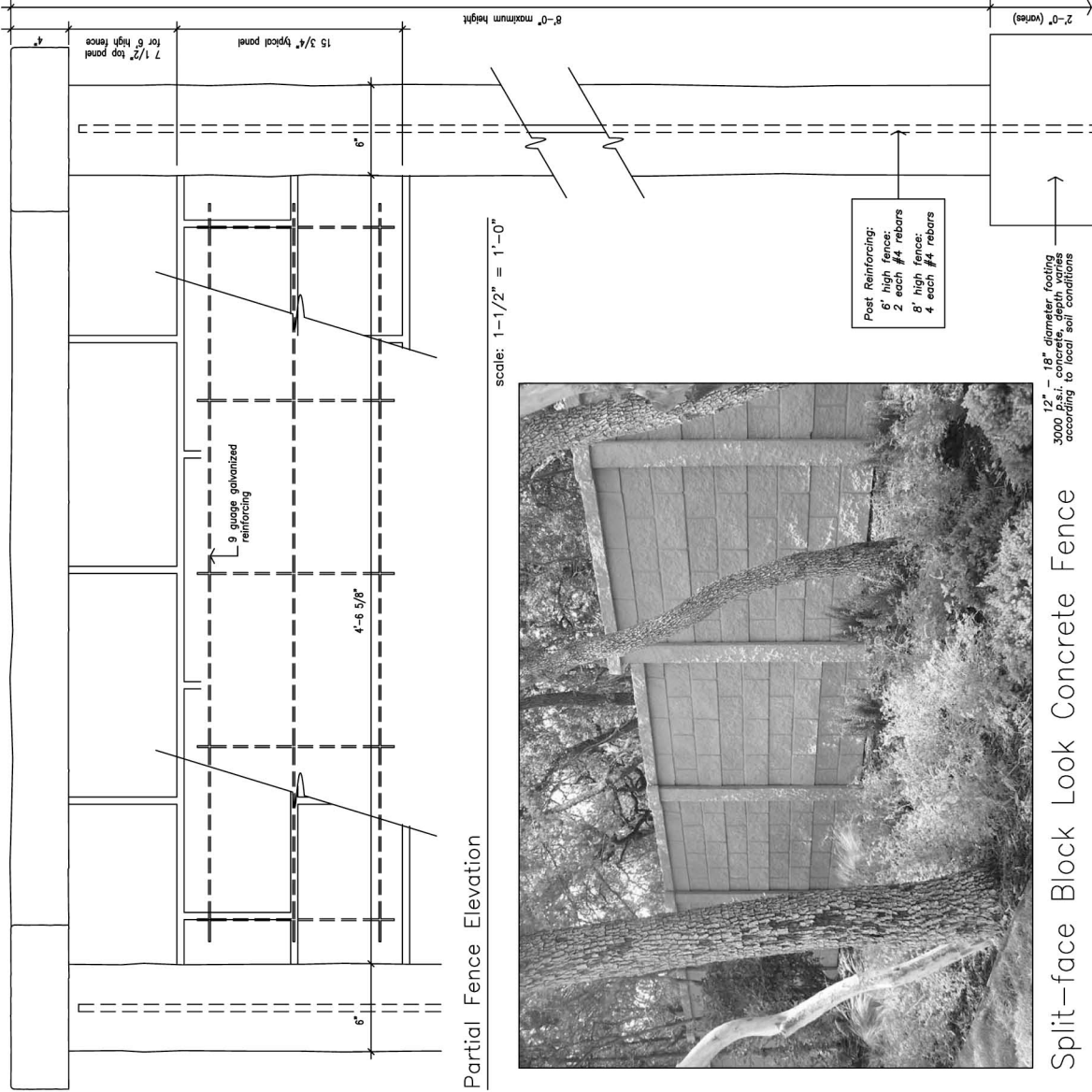


Our block style offers the upscale look of a split face cmu block wall without the need of an expensive continuous footing. Therefore, eliminating cost and a lengthy installation process.

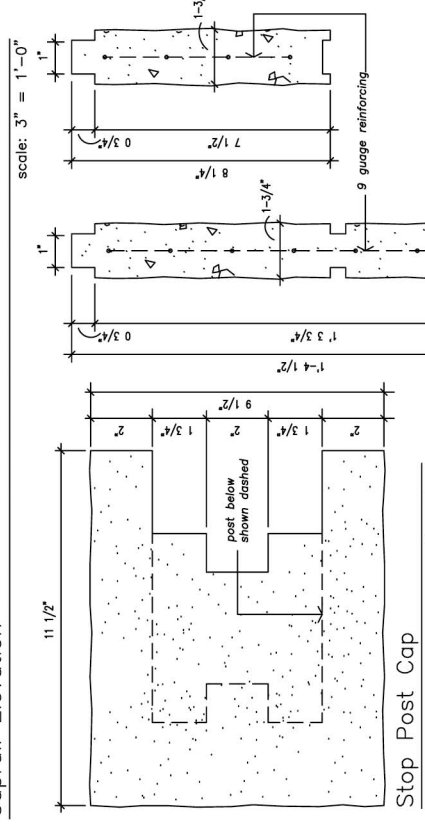
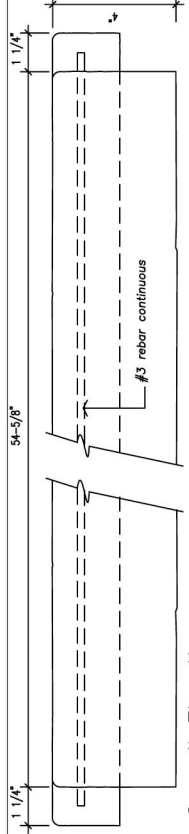
15089 Tradesman Drive ● San Antonio, Texas 78249  
Phone: (210) 492-7911 ● Fax: (210) 492-8943 ● Toll Free: 1 (800) 229-7811  
[www.fencecrete.com](http://www.fencecrete.com)



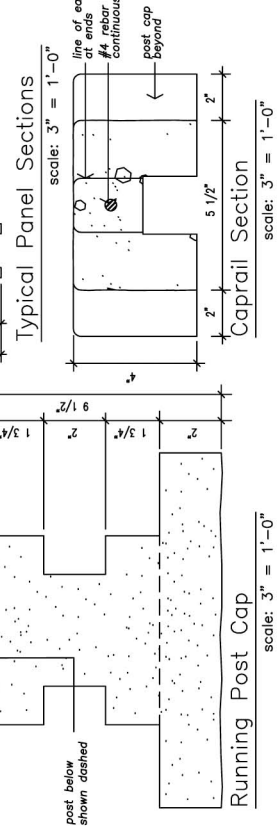
**FENCECRETE AMERICA, INC.**  
 manufacturers of precast concrete fencing and masonry wall systems  
 15089 tradesmen drive san antonio, texas 78249 210-492-7911 800-229-7811 www.fencecrete.com



Split-face Block Look Concrete Fence



Note:  
 Split-face Block Posts are 6" wide x 6 1/2" deep with split-face block texture from top to bottom with no intermediate joints. Steel reinforcing is provided according to manufacturer's details.



notes:  
 1. The column height can be from 0 to a maximum of 10'-0". Additional heights are available upon special order.  
 2. All fence concrete shall be 3000 p.s.i. grade 60. Special reinforcement is available upon special order.  
 3. Concrete Footing: 12" diameter, 3,000 p.s.i. concrete, depth varies according to local soil conditions.  
 4. Split-face Block look panels can be provided in a variety of colors.  
 5. Split-face Block look panels have split-face block-like texture.  
 6. All posts shall have additional steel support adjacent to concrete columns.  
 7. A special silicone sealant is used to lock the caprail and post caps in place. This sealant requires special tools for removal.

We reserve the right to alter the design or specifications without incurring any obligation, all rights reserved.  
 Fencecrete America, Inc.

Our block style offers the upscale look of a split face cmu block wall without the need of an expensive continuous footing. Therefore, eliminating cost and a lengthy installation process.

