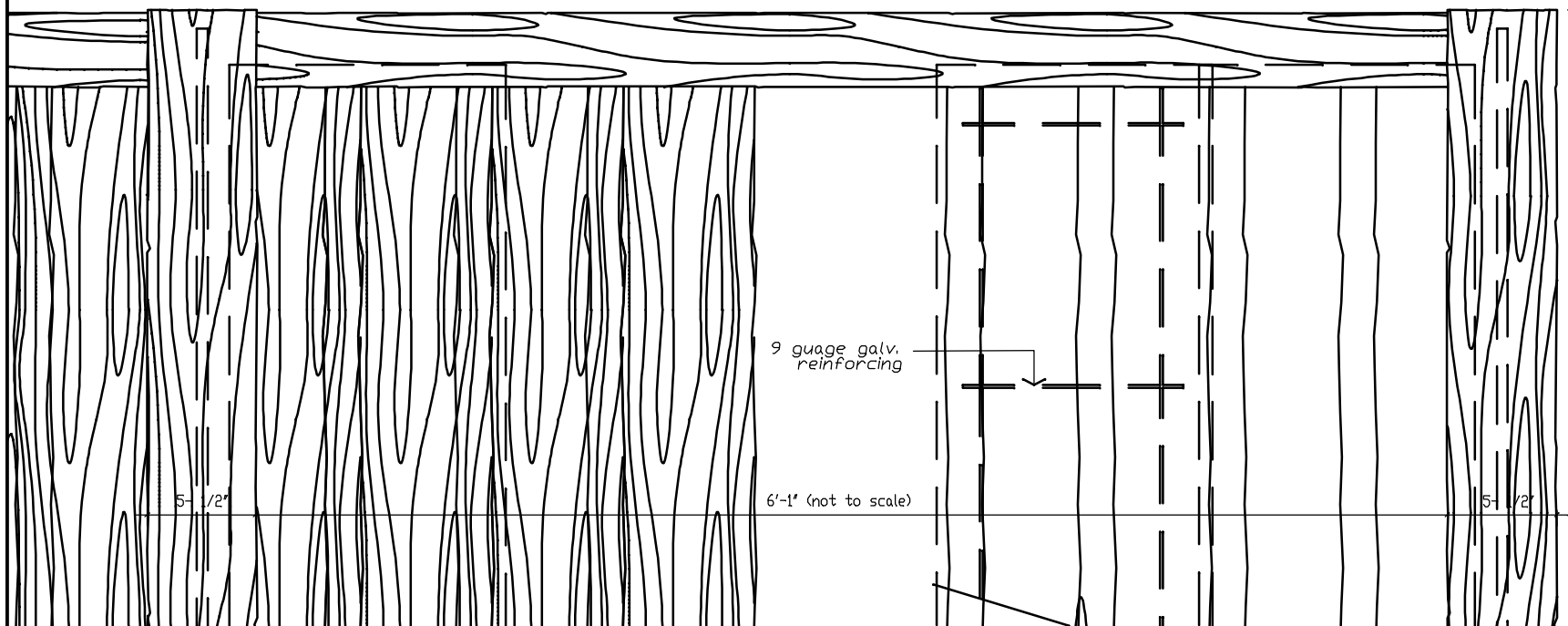




FENCECRETE AMERICA, LTD.
 manufacturers of precast concrete fencing and masonry wall systems
 15089 tradesmen drive san antonio, texas 78249 210-492-7911 www.fencecrete.com



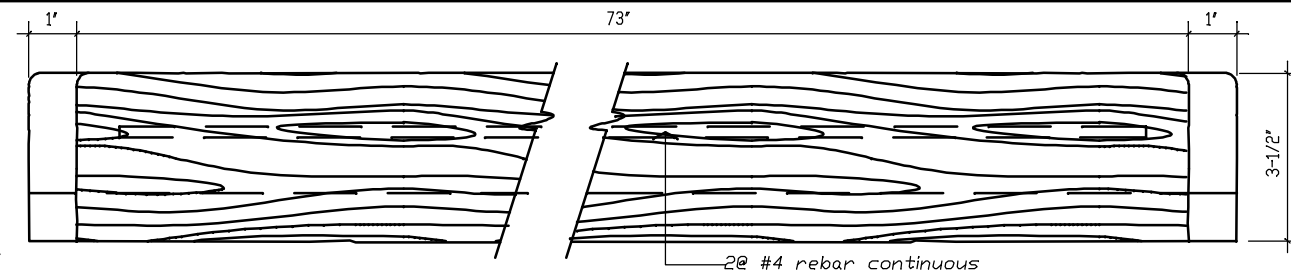
Partial Fence Elevation

scale: 1-1/2" = 1'-0"



Vertical Wood Look Concrete Fence

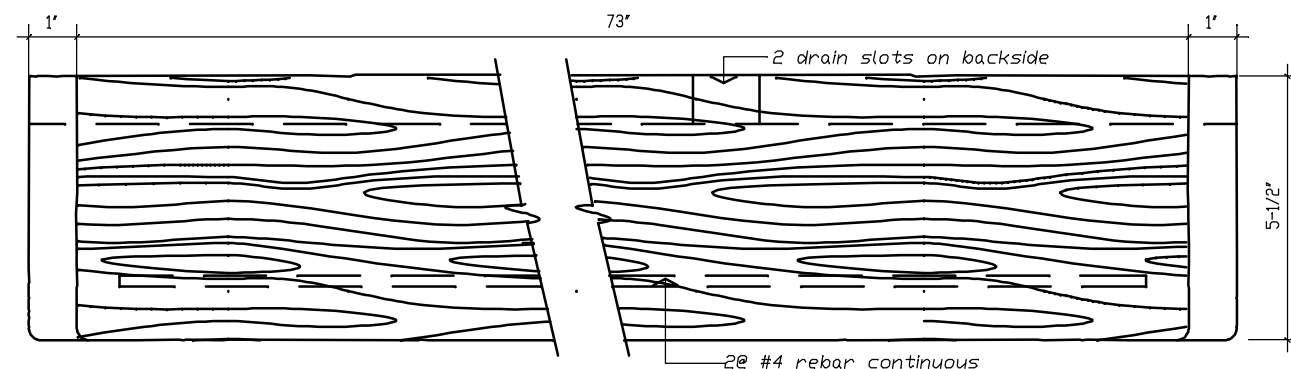
Footing: 18" diameter, 24" deep
 3000 p.s.i. concrete, varies
 according to local soil conditions



Caprail Elevation

front view

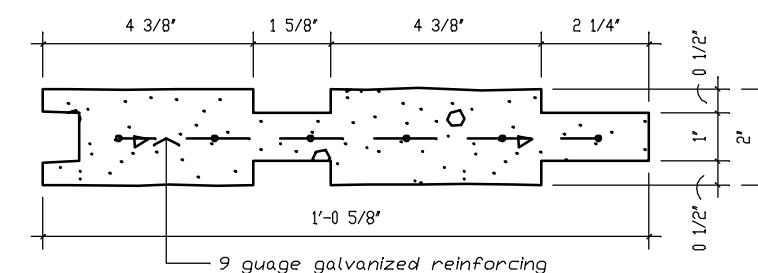
scale: 3" = 1'-0"



Bottom Beam Elevation

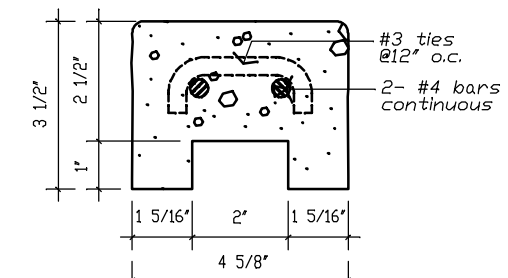
front view

scale: 3" = 1'-0"



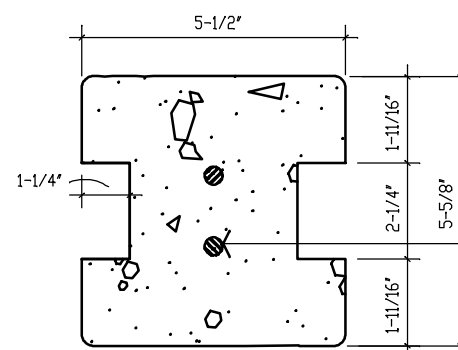
Typical Panel Section

scale: 3" = 1'-0"



Caprail Section

scale: 3" = 1'-0"

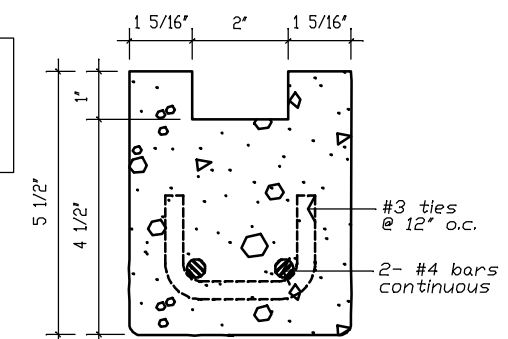


Running Post Section

scale: 3" = 1'-0"

NOTE: Details of additional fence post conditions are similar to those shown on Wood Look Conc. Fence Detail sheet

2@ continuous #4 rebars typical all posts



Bottom Beam Section

scale: 3" = 1'-0"

notes:

1. The column height is 8'-0". Fence height is 6'-0". This style is currently not available in any other heights.
2. All concrete shall be 5000 p.s.i.
3. All reinforcement shall be A.S.T.M. 615 grade 60. Special reinforcement is available upon special order.
4. Footing - 2 feet deep footing standard per column, 12" - 18" diameter. Depth and diameter can vary per local soil conditions.
5. Color: Tan / Brown. Any other specific color will be produced upon special order.
6. Texture: All exposed sides have heavy wood-grained texture.
7. Gates: Shall have additional steel supports adjacent to concrete columns.
8. All steel reinforcement is prewelded with steel spacers so as to allow for maximum concrete coverage.
9. A special silicone sealant is used to lock the caprail in place. This sealant requires special tools for removal.

We reserve the right to alter the design or specifications without incurring any obligation, all rights reserved.
 Fencecrete America, Limited 2006