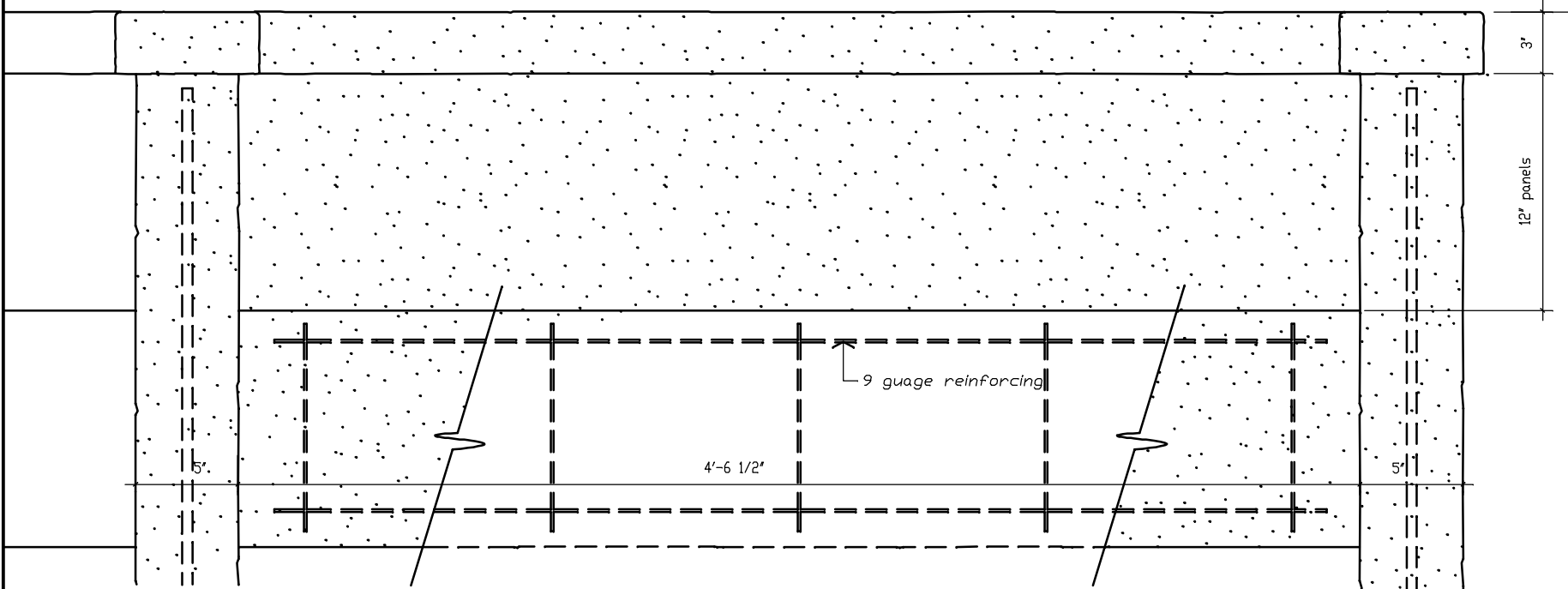




FENCECRETE AMERICA, LTD.
 manufacturers of precast concrete fencing and masonry wall systems
 15089 tradesmen drive san antonio, texas 78249 210-492-7911 800-229-7811 www.fencecrete.com



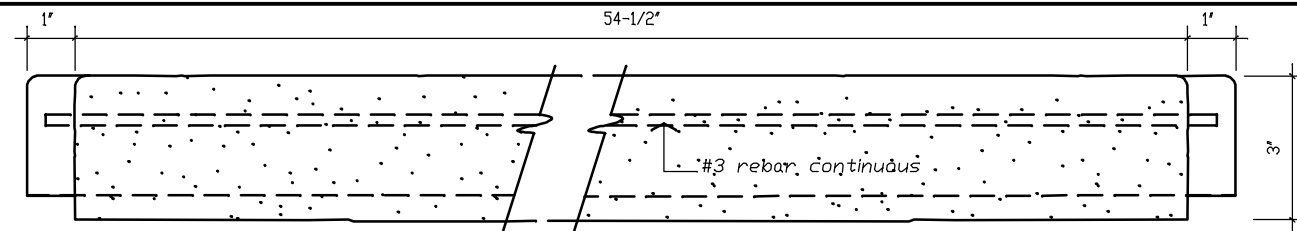
Partial Fence Elevation

scale: 1-1/2" = 1'-0"



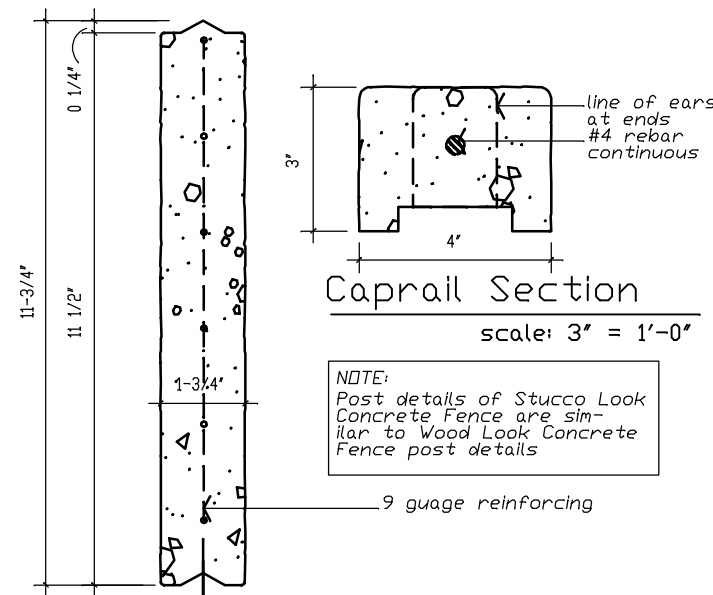
Stucco Look Concrete Fence

footing: 18" diameter, 24" deep
 3000 p.s.i. concrete, varies
 according to local soil conditions



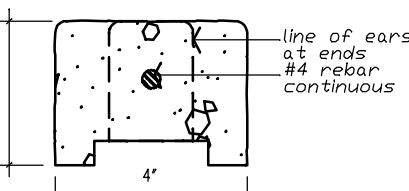
Caprail Elevation

scale: 3" = 1'-0"



Typical Panel Section

scale: 3" = 1'-0"

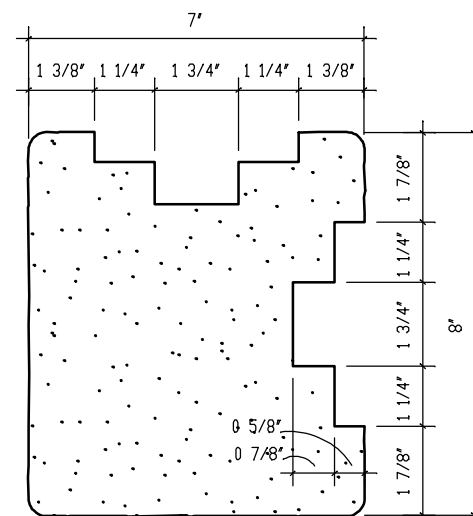


Caprail Section

scale: 3" = 1'-0"

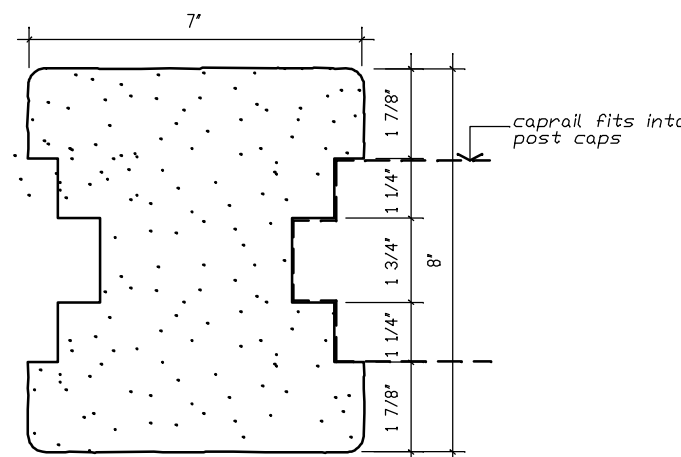
NOTE:
 Post details of Stucco Look
 Concrete Fence are sim-
 ilar to Wood Look Concrete
 Fence post details

9 gauge reinforcing



Corner Post Cap

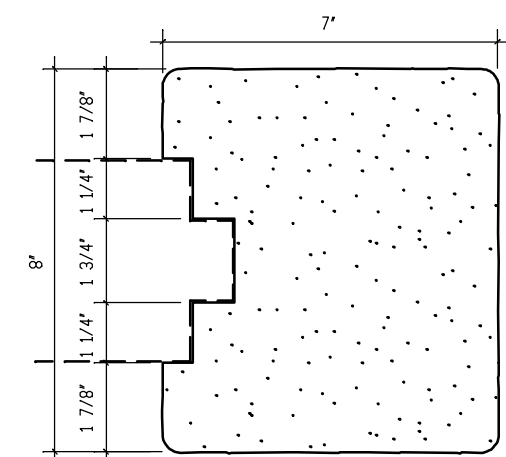
scale: 3" = 1'-0"



Running Post Cap

scale: 3" = 1'-0"

caprail fits into
 post caps



Stop Post Cap

scale: 3" = 1'-0"

notes:

1. The column height can be from 0 to a maximum of 10'-0" - with 8'-0" above grade.
2. All concrete shall be 5000 p.s.i.
3. All reinforcement shall be A.S.T.M. 615 grade 60. Special reinforcement is available upon special order.
4. Footing - 2 feet deep footing standard per column, 12" - 18" diameter. Depth and diameter can vary per local soil conditions.
5. Texture: All exposed sides have stucco-like texture.
6. Gates: Shall have additional steel supports adjacent to concrete columns.
7. All steel reinforcement is prewelded with steel spacers so as to allow for maximum concrete coverage.
8. A special silicone sealant is used to lock the caprail and post caps in place. This sealant requires special tools for removal.

We reserve the right to alter the design or specifications without incurring any obligation, all rights reserved.
 Fencecrete America, Limited