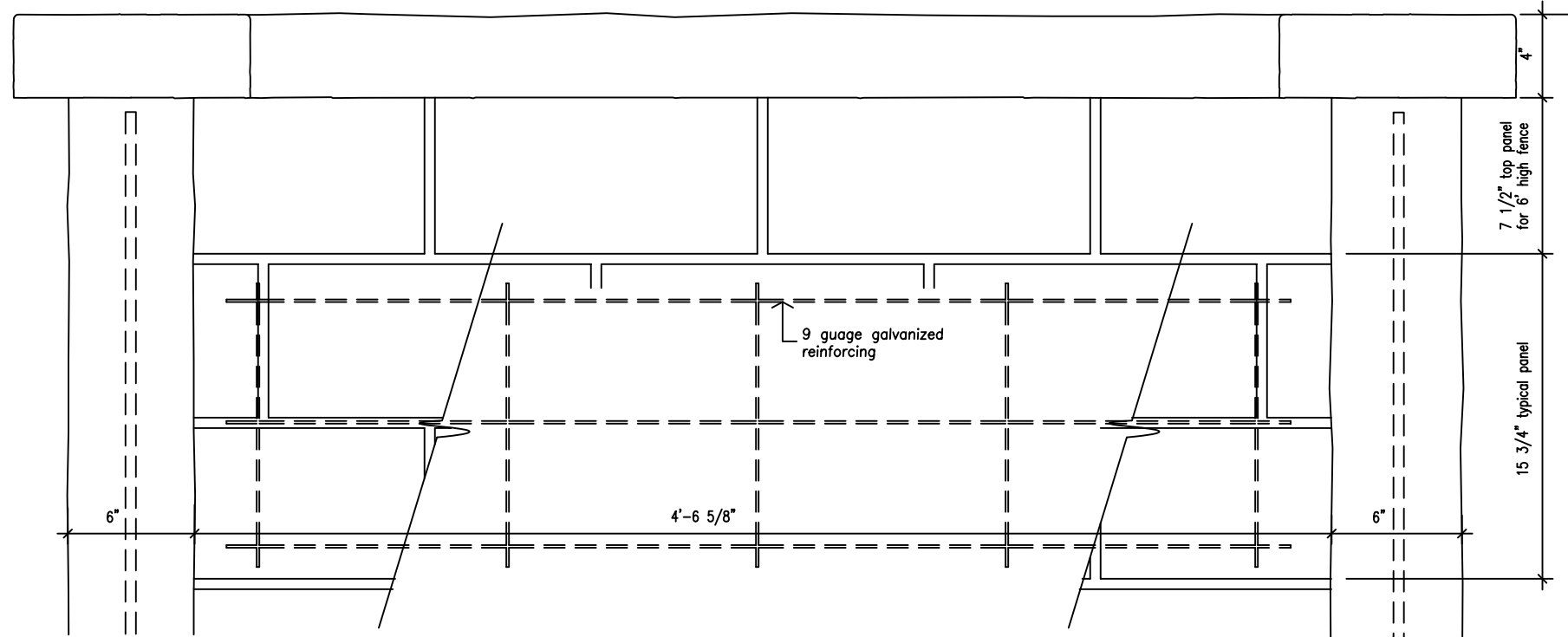




FENCECRETE AMERICA, LTD.

manufacturers of precast concrete fencing and masonry wall systems
 15089 tradesmen drive san antonio, texas 78249 210-492-7911 800-229-7811 www.fencecrete.com



Partial Fence Elevation

scale: 1-1/2" = 1'-0"



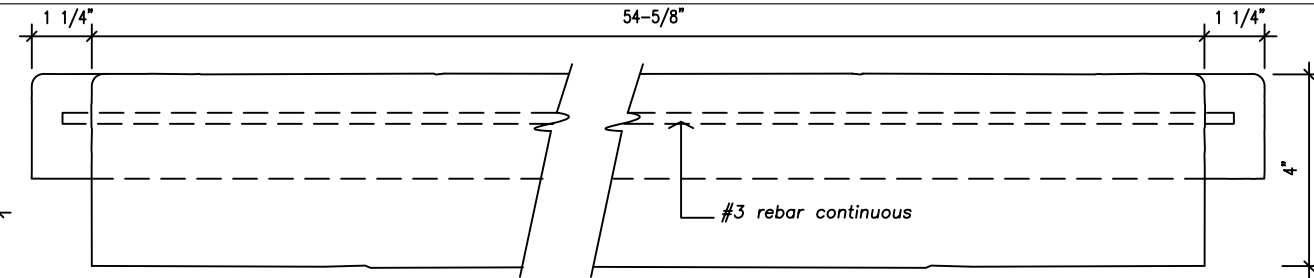
Split-face Block Look Concrete Fence

12" - 18" diameter footing
 3000 p.s.i. concrete, depth varies
 according to local soil conditions

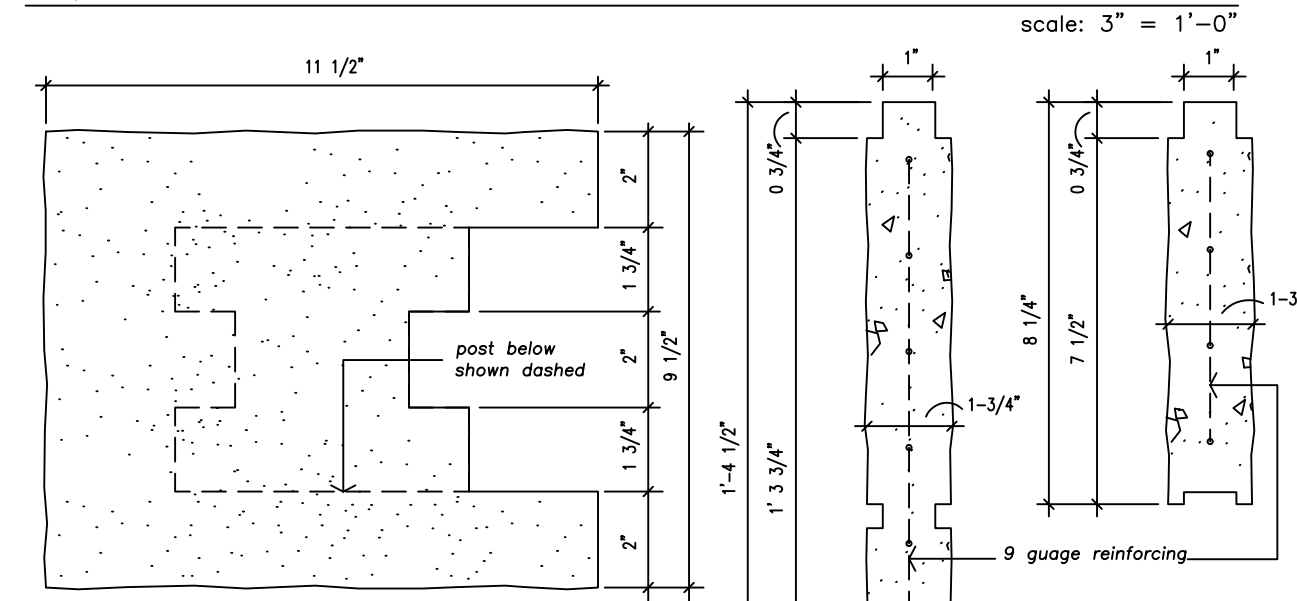
Post Reinforcing:
 6' high fence:
 2 each #4 rebars
 8' high fence:
 4 each #4 rebars

8'-0" maximum height

2'-0" (varies)

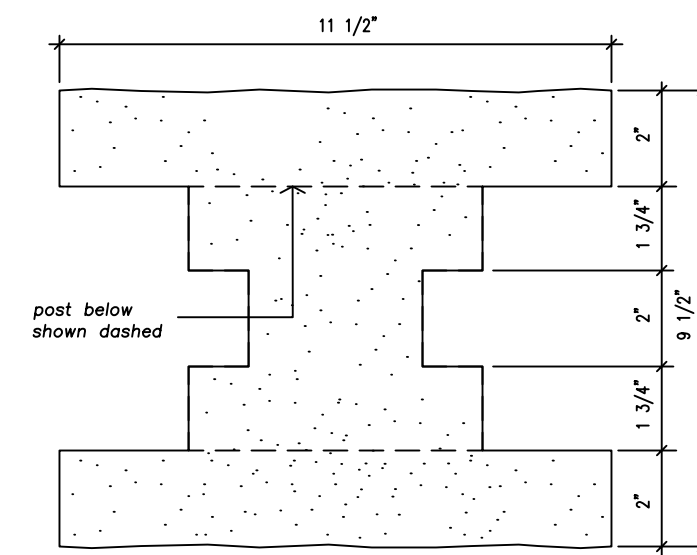


Caprail Elevation



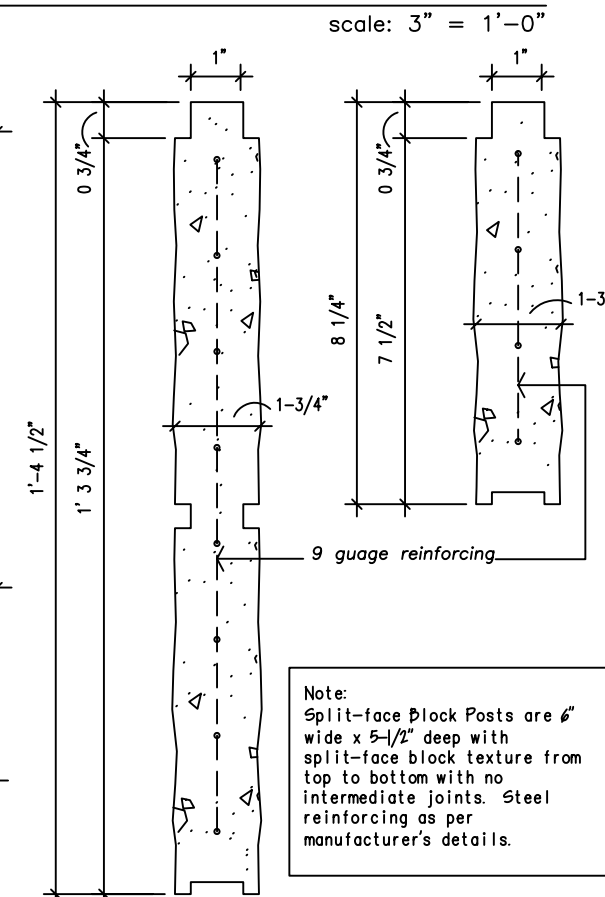
Stop Post Cap

scale: 3" = 1'-0"



Running Post Cap

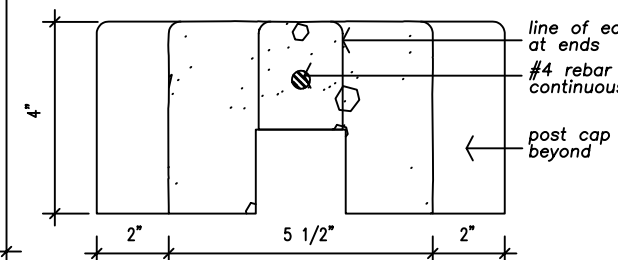
scale: 3" = 1'-0"



Typical Panel Sections

scale: 3" = 1'-0"

Note:
 Split-face Block Posts are 6" wide x 5-1/2" deep with split-face block texture from top to bottom with no intermediate joints. Steel reinforcing as per manufacturer's details.



Caprail Section

scale: 3" = 1'-0"

notes:

1. The column height can be from 0 to a maximum of 10'-0". Additional heights are available upon special order.
2. All fence concrete shall be 5000 p.s.i.
3. All reinforcement shall be A.S.T.M. 615 grade 60. Special reinforcement is available upon special order.
4. Concrete Footing: 12" - 18" diameter, 3,000 p.s.i. concrete, depth varies according to local soil conditions.
5. Split-face Block look panels can be provided in a variety of colors.
6. Texture: All exposed sides have split-face block-like texture.
7. Gates: Shall have additional steel supports adjacent to concrete columns.
8. All steel reinforcement is prewelded with steel spacers so as to allow for maximum concrete coverage.
9. A special silicone sealant is used to lock the caprail and post caps in place. This sealant requires special tools for removal.

We reserve the right to alter the design or specifications without incurring any obligation, all rights reserved.
 Fencecrete America, Limited