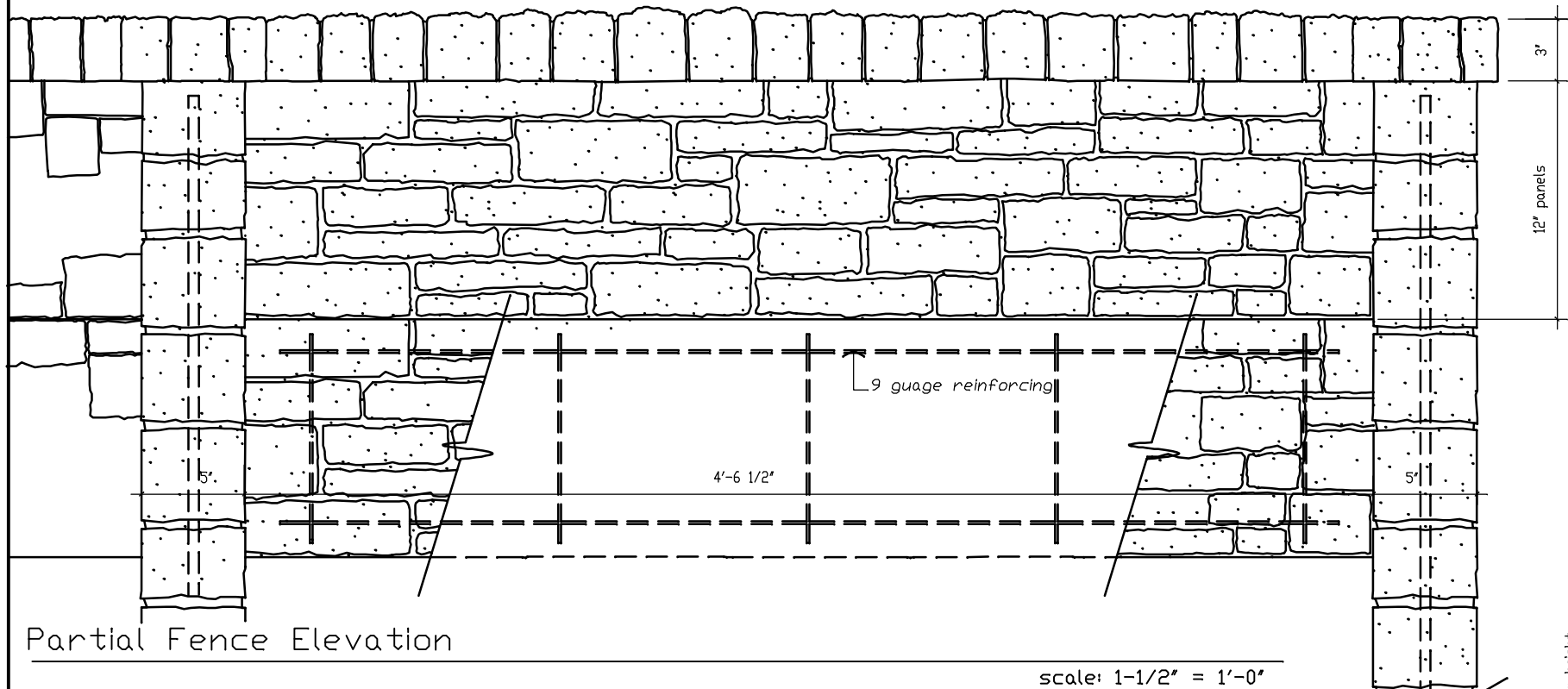


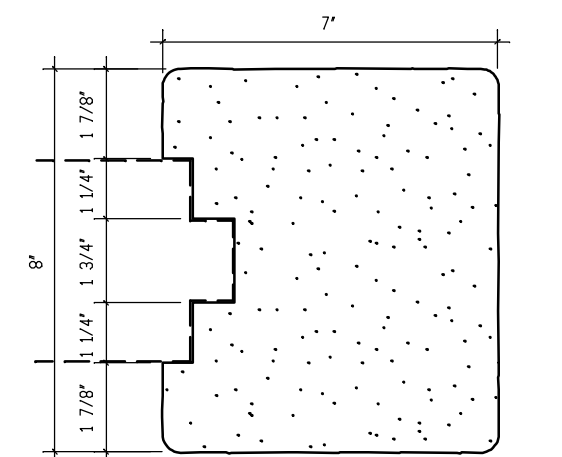
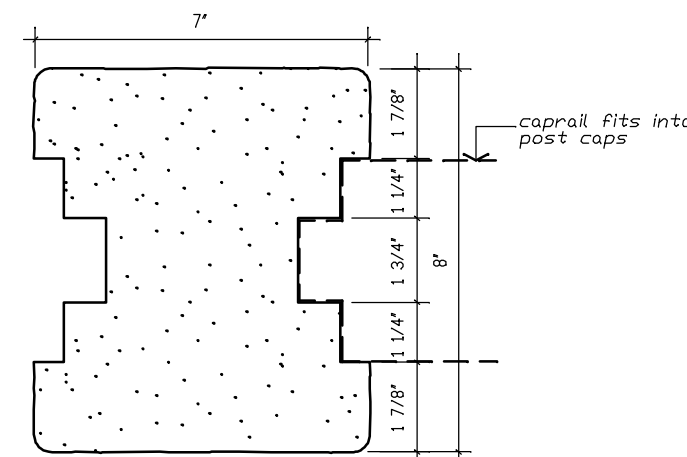
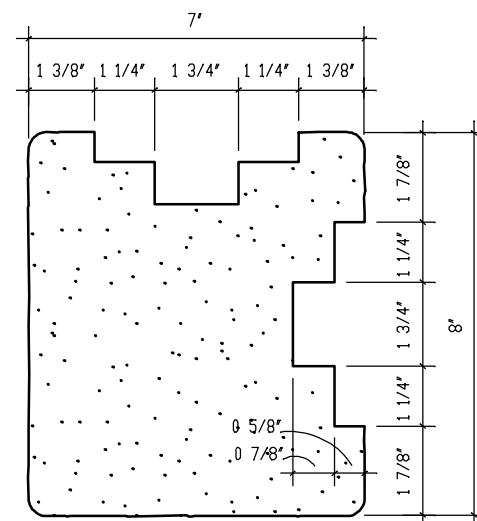
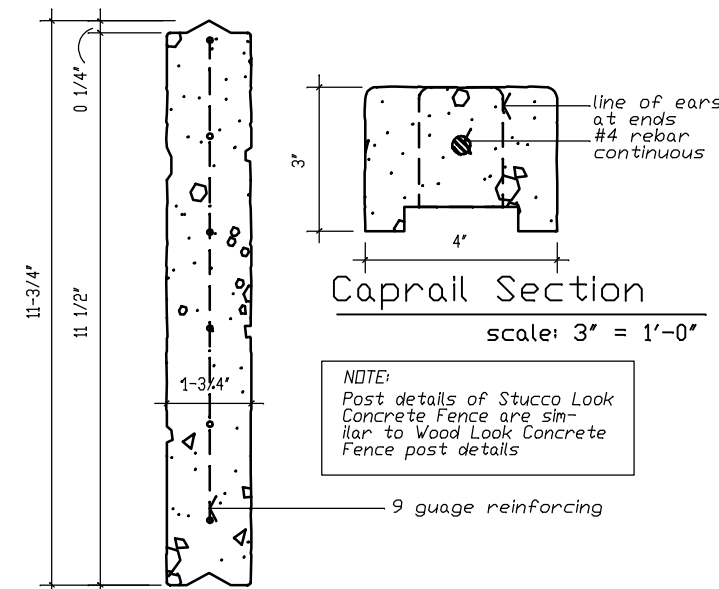
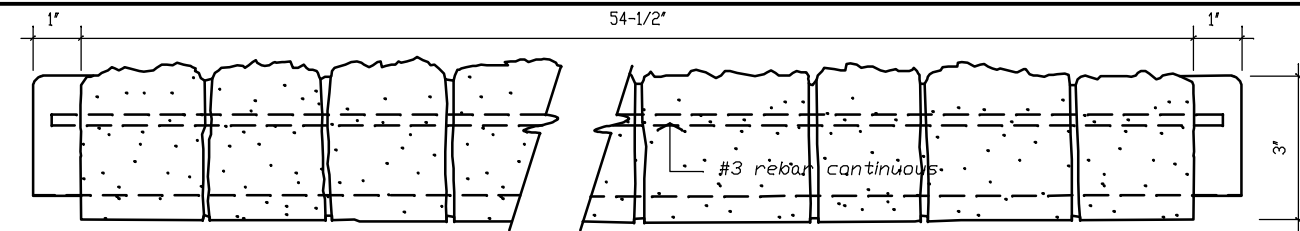
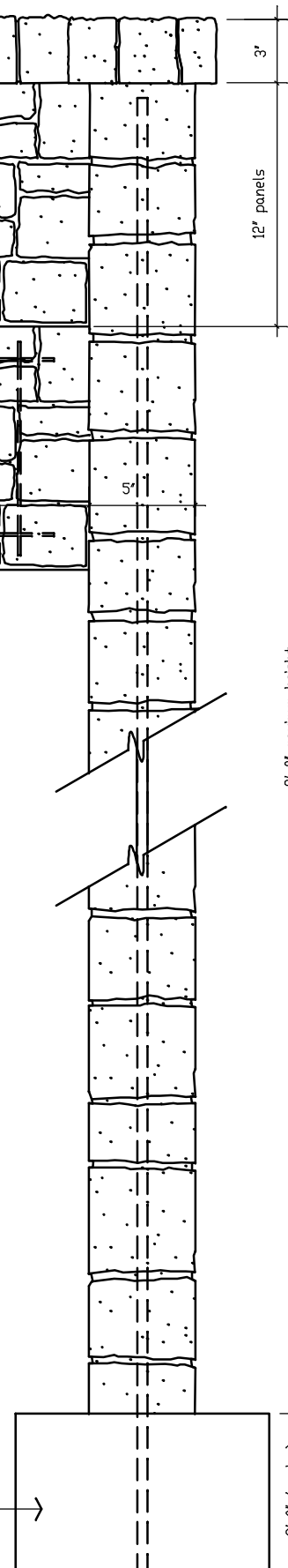


**FENCECRETE AMERICA, LTD.**  
 manufacturers of precast concrete fencing and masonry wall systems  
 15089 tradesmen drive san antonio, texas 78249 210-492-7911 800-229-7811 www.fencecrete.com



Rock Look Concrete Fence

footing: 18" diameter, 24" deep  
 3000 p.s.i. concrete, varies  
 according to local soil conditions



- notes:
- The column height can be from 0 to a maximum of 10'-0" - with 8'-0" above grade.
  - All concrete shall be 5000 p.s.i.
  - All reinforcement shall be A.S.T.M. 615 grade 60. Special reinforcement is available upon special order.
  - Footing - 2 feet deep footing standard per column, 12" - 18" diameter. Depth and diameter can vary per local soil conditions.
  - Texture: All exposed sides have rock-like texture.
  - Gates: Shall have additional steel supports adjacent to concrete columns.
  - All steel reinforcement is prewelded with steel spacers so as to allow for maximum concrete coverage.
  - A special silicone sealant is used to lock the caprail and post caps in place. This sealant requires special tools for removal.

We reserve the right to alter the design or specifications without incurring any obligation, all rights reserved.  
 Fencecrete America, Limited