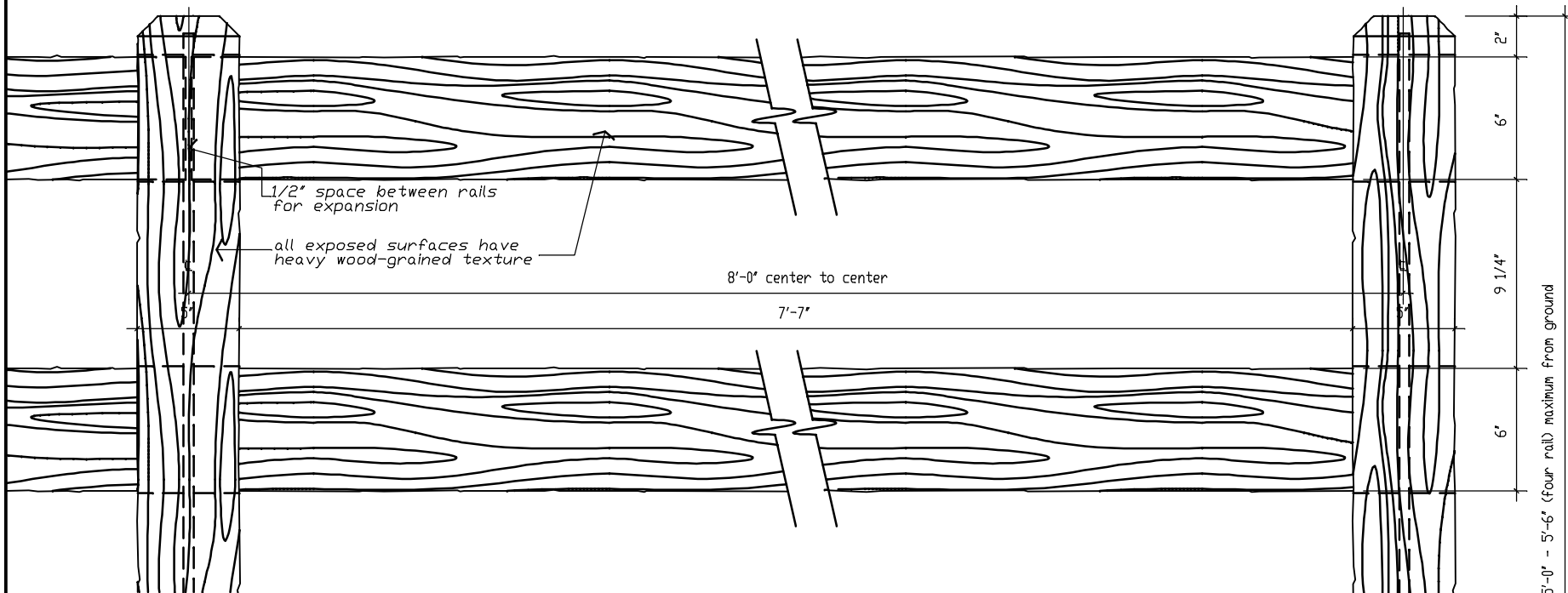


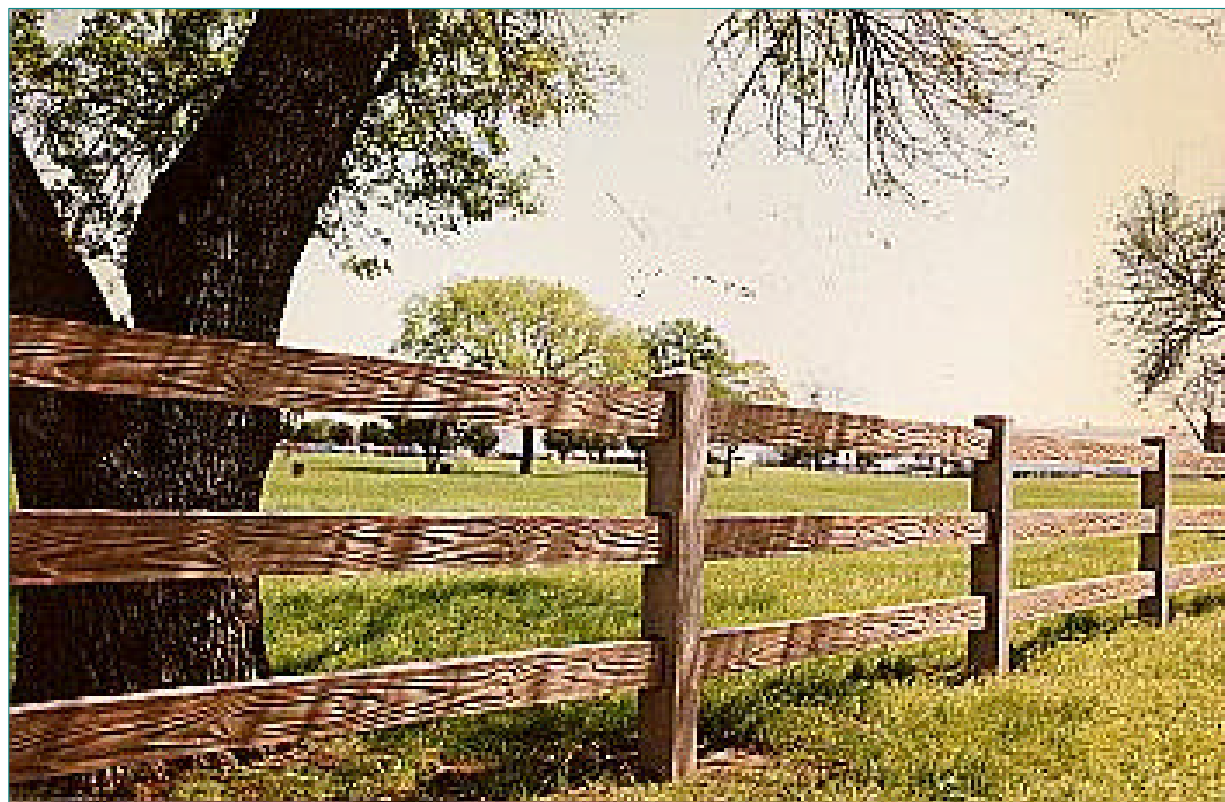


FENCECRETE AMERICA, LTD.
 manufacturers of precast concrete fencing and masonry wall systems
 15089 tradesmen drive san antonio, texas 78249 210-492-7911 800-229-7811 www.fencecrete.com



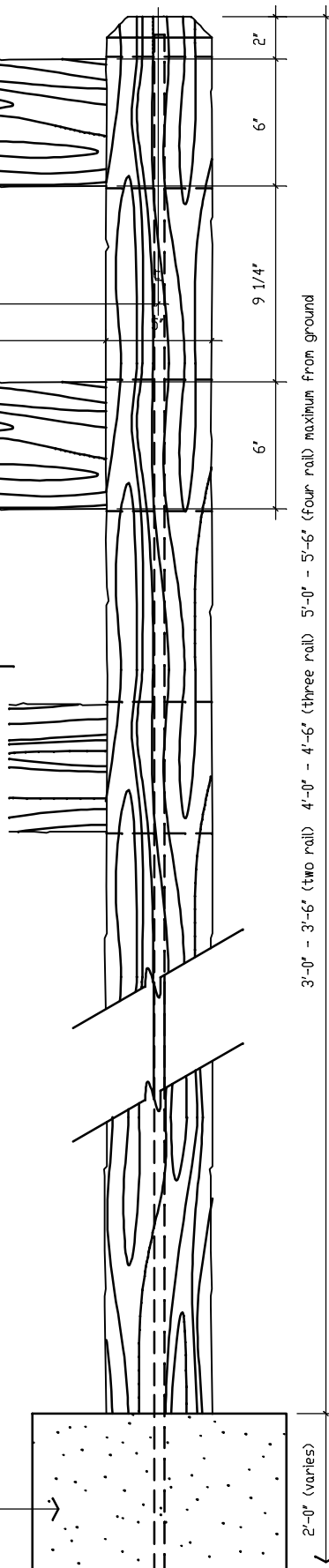
Partial Fence Elevation

scale: 1-1/2" = 1'-0"

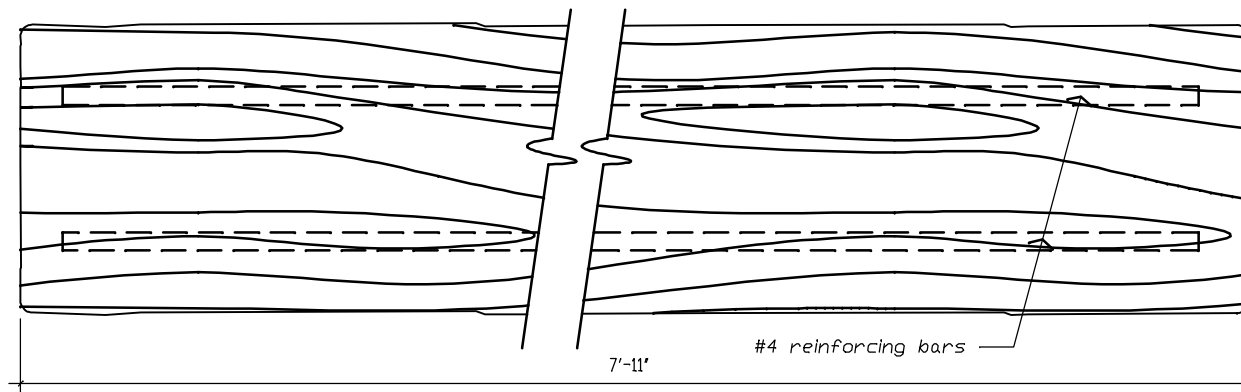


Ranch Style Concrete Fence

footing: 18" diameter, 24" deep
 3000 p.s.i. concrete, varies
 according to local soil conditions

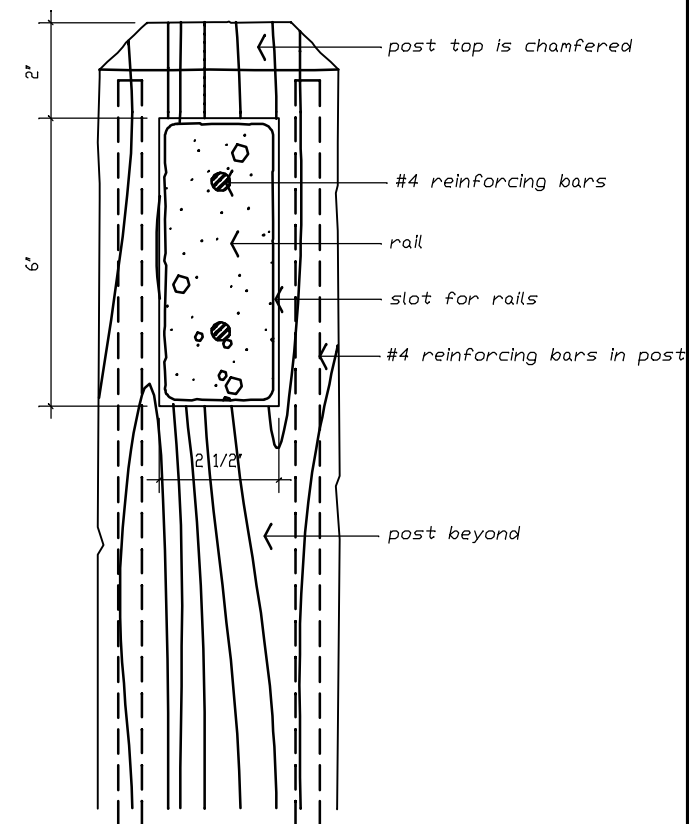


3'-0" - 3'-6" (two rail) 4'-0" - 4'-6" (three rail) 5'-0" - 5'-6" (four rail) maximum from ground



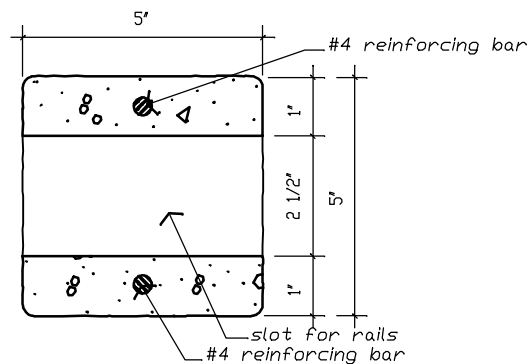
Rail Elevation

scale: 3" = 1'-0"



Section thru Rail

scale: 3" = 1'-0"



Post Cross Section

scale: 3" = 1'-0"

notes:

1. The columns can be provided in 2, 3, or 4 rail styles.
2. All concrete shall be 5000 p.s.i.
3. All reinforcement shall be A.S.T.M. 615 grade 60. Special reinforcement is available upon special order.
4. Footing - 2 feet deep footing standard per column, 12" - 18" diameter. Depth and diameter can vary per local soil conditions.
5. Color: Tan / Brown. Any other specific color will be produced upon special order.
6. Texture: All exposed sides have heavy wood-grained texture.
7. Gates: Shall have additional steel supports adjacent to concrete columns.
8. All steel reinforcement is prewelded with steel spacers so as to allow for maximum concrete coverage.

We reserve the right to alter the design or specifications without incurring any obligation, all rights reserved.
 Fencecrete America, Limited