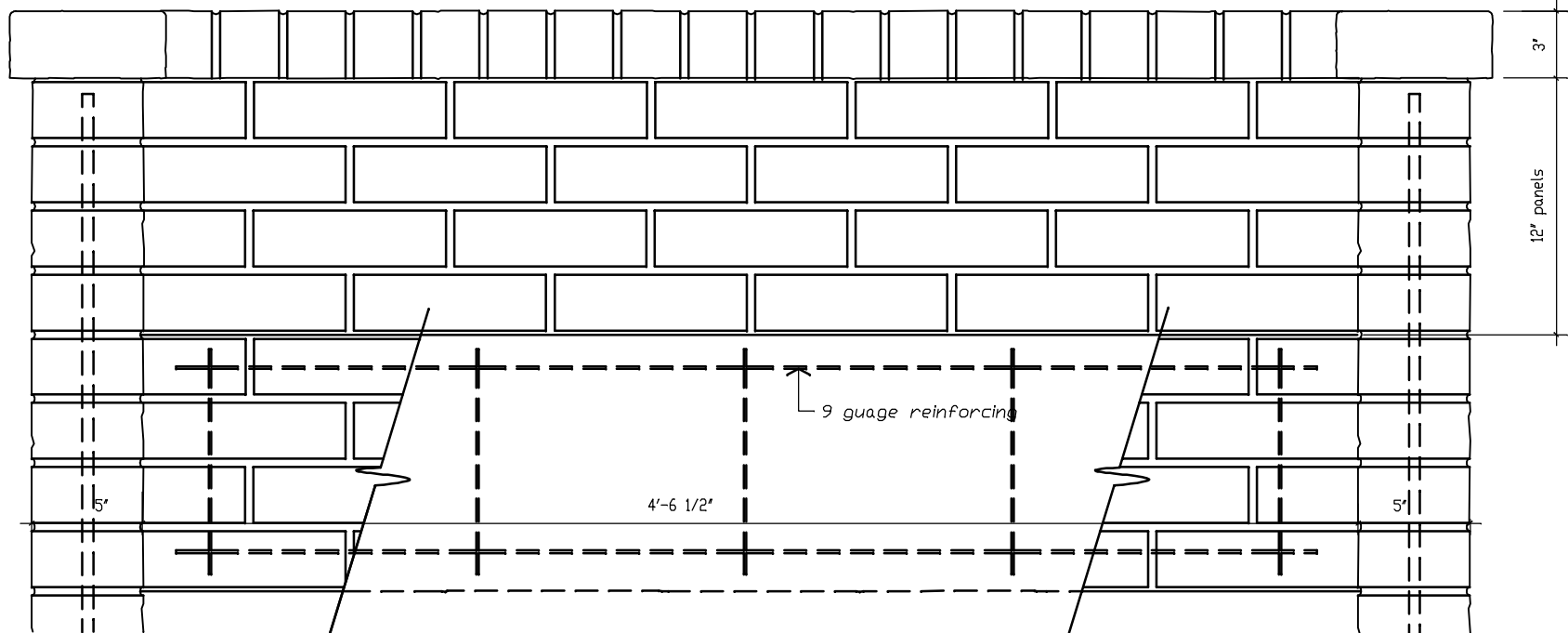




FENCECRETE AMERICA, LTD.
 manufacturers of precast concrete fencing and masonry wall systems
 15089 tradesmen drive san antonio, texas 78249 210-492-7911 800-229-7811 www.fencecrete.com

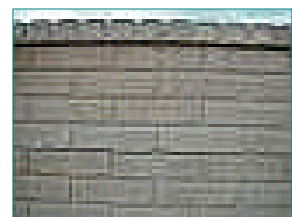


Partial Fence Elevation

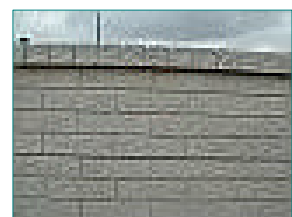
scale: 1-1/2" = 1'-0"



Brick Look Concrete Fence
 Rustic Style and Antique Style

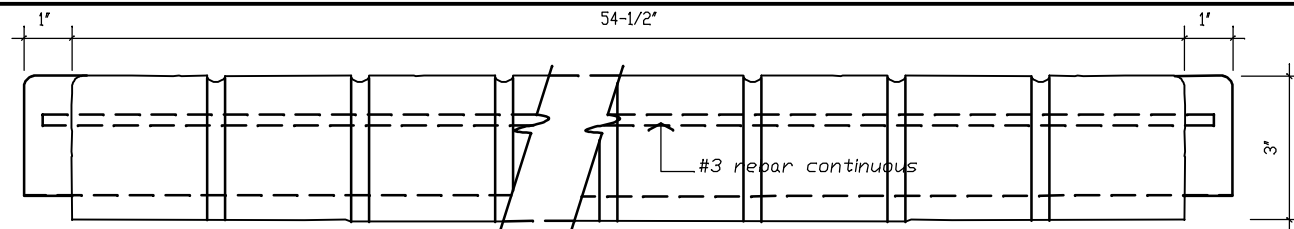


Rustic Style brick



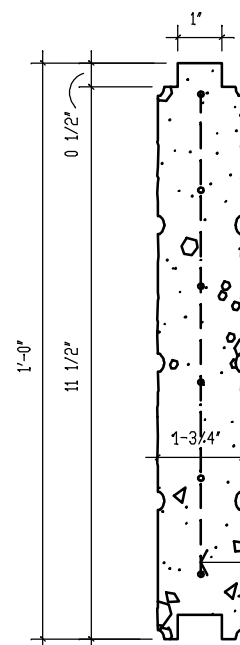
Antique Style brick

footing: 18" diameter, 24" deep
 3000 p.s.i. concrete, varies
 according to local soil conditions



Caprail Elevation

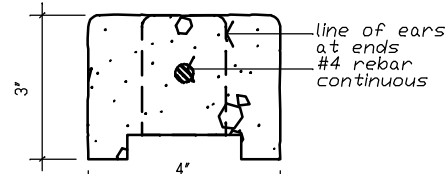
scale: 3" = 1'-0"



Typical Panel Section

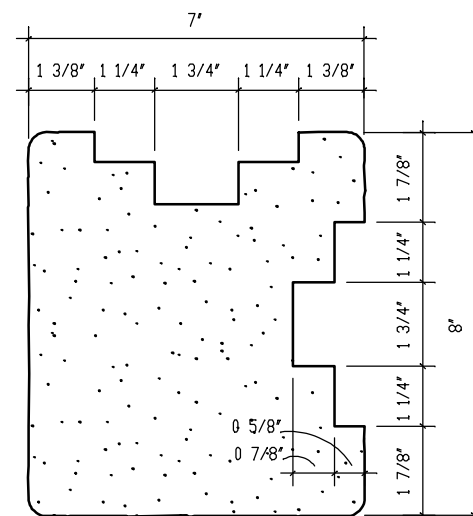
scale: 3" = 1'-0"

NOTE:
 Post details of Brick Look
 Concrete Fence are sim-
 ilar to Wood Look Concrete
 Fence post details



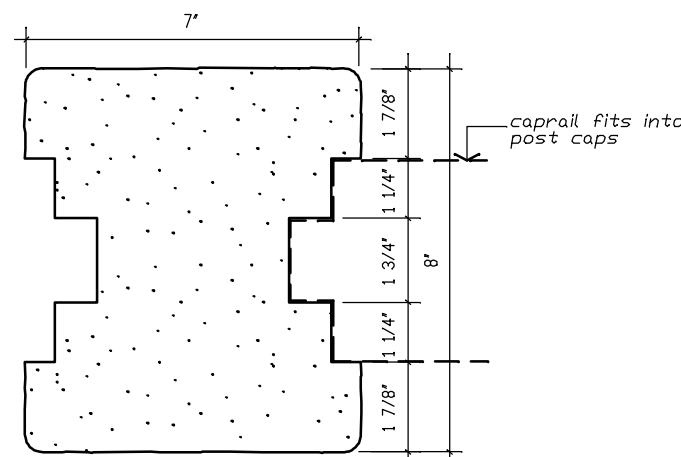
Caprail Section

scale: 3" = 1'-0"



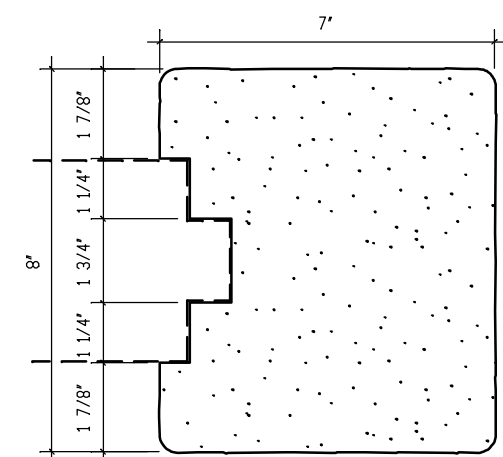
Corner Post Cap

scale: 3" = 1'-0"



Running Post Cap

scale: 3" = 1'-0"



Stop Post Cap

scale: 3" = 1'-0"

notes:

1. The column height can be from 0 to a maximum of 10'-0". Additional heights are available upon special order.
2. All concrete shall be 5000 p.s.i.
3. All reinforcement shall be A.S.T.M. 615 grade 60. Special reinforcement is available upon special order.
4. Footing - 2 feet deep footing standard per column, 12" - 18" diameter. Depth and diameter can vary per local soil conditions.
5. Brick look panels can be provided in a variety of colors and are available in "used" or "rustic" brick styles.
6. Texture: All exposed sides have brick-like texture.
7. Gates: Shall have additional steel supports adjacent to concrete columns.
8. All steel reinforcement is prewelded with steel spacers so as to allow for maximum concrete coverage.
9. A special silicone sealant is used to lock the caprail and post caps in place. This sealant requires special tools for removal.

We reserve the right to alter the design or specifications without incurring any obligation, all rights reserved.
 Fencecrete America, Limited