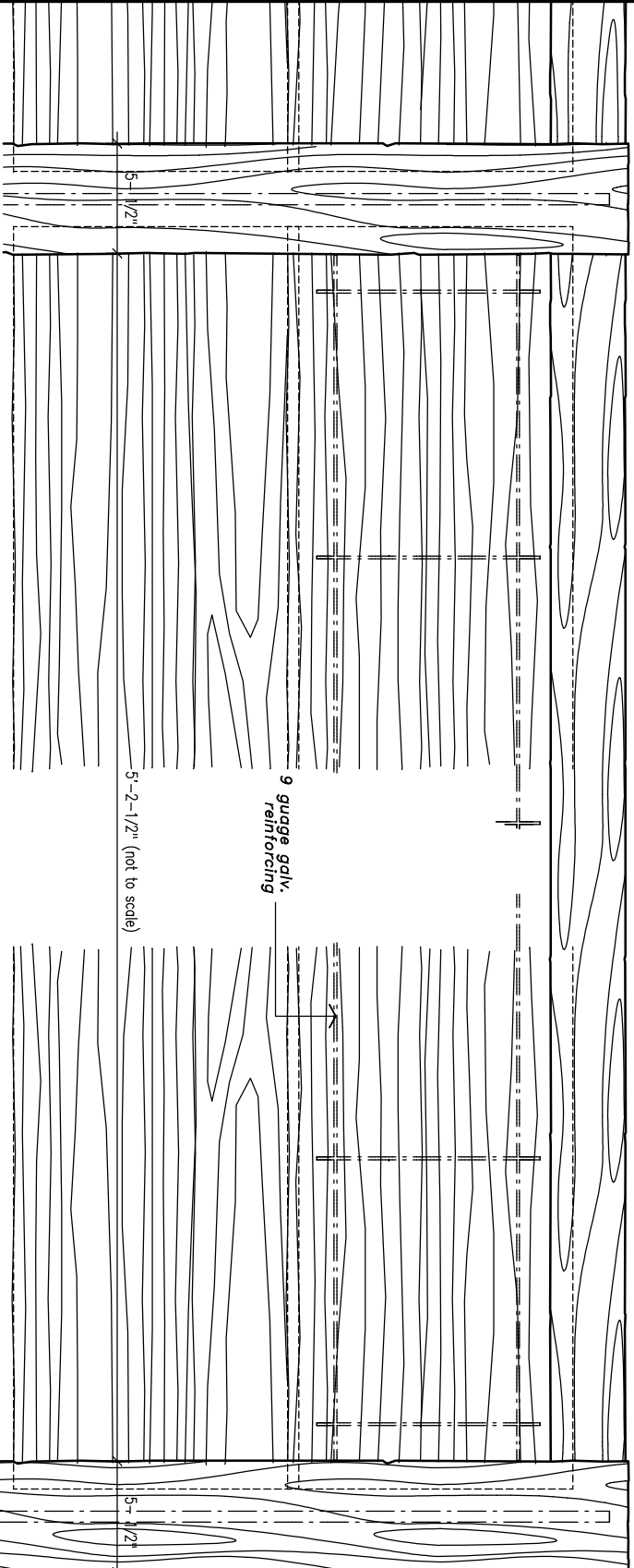




# FENCECRETE AMERICA, INC.

manufacturers of precast concrete fencing and masonry wall systems  
 15089 tradesmen drive san antonio, texas 78249 210-492-7911 800-229-7811 www.fencecrete.com

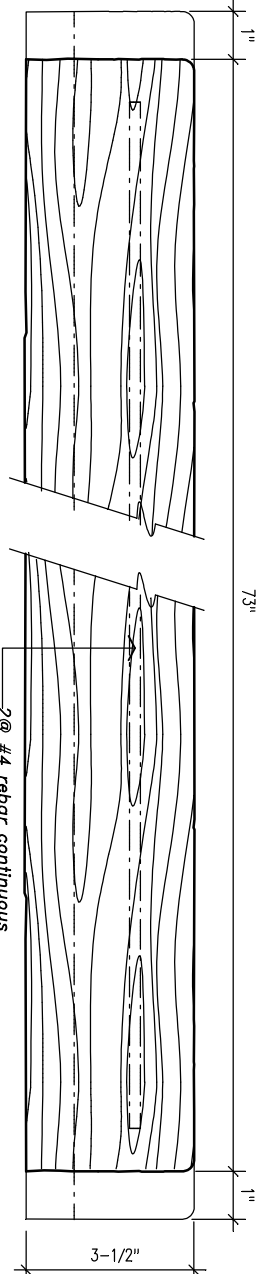
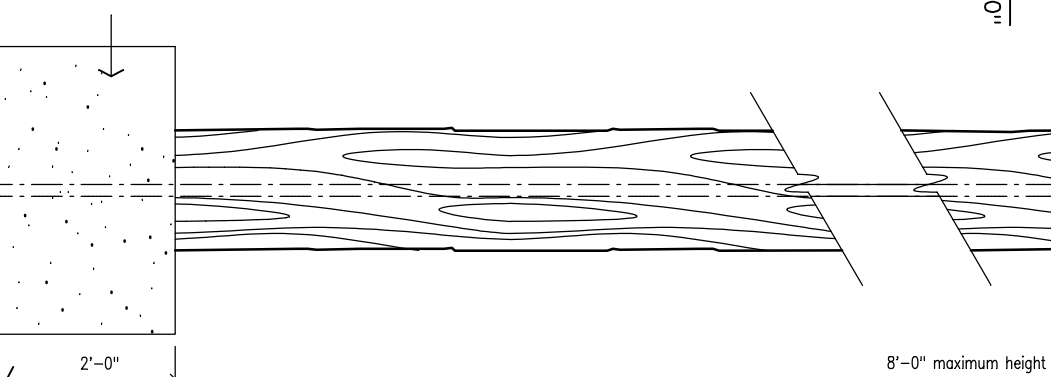


Partial Fence Elevation

scale: 1-1/2" = 1'-0"



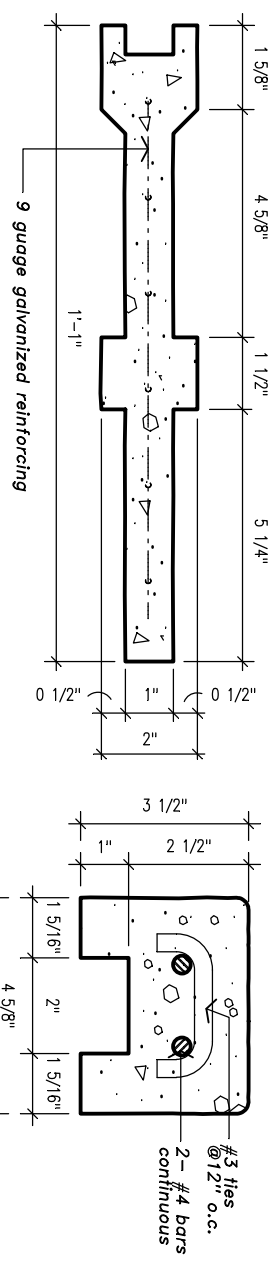
footing: 1g" diameter, 24" deep  
 3000 p.s.i. concrete, varies  
 according to local soil conditions



Caprail Elevation

front view

scale: 3" = 1'-0"

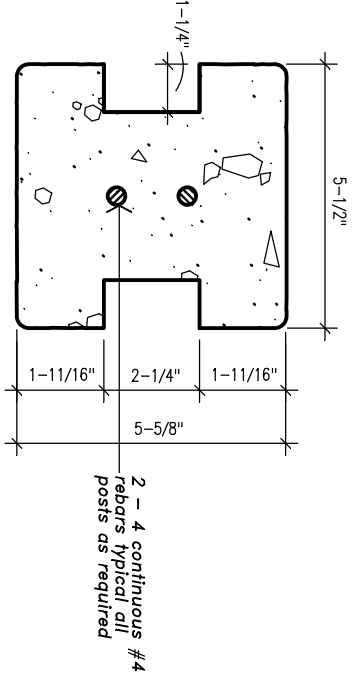


Typical Panel Section

scale: 3" = 1'-0"

Caprail Section

scale: 3" = 1'-0"



Running Post Section

scale: 3" = 1'-0"

NOTE:  
 Details of additional fence post conditions  
 are similar to those shown on the Wood Look  
 Concrete Fence detail sheet.

**notes:**

1. Maximum fence height on horizontal panel fences is 10'-0".
2. All concrete shall be 5000 P.S.I.
3. All reinforcement shall be A.S.T.M. 615 grade 60. Special reinforcement is available upon special order.
4. Footing - 2 feet deep footing standard per column, 12" - 18" diameter. Depth and diameter can vary per local soil conditions.
5. Texture: All exposed sides have heavy wood-grained texture.
6. Gates: Shall have additional steel supports adjacent to concrete columns.
7. All steel reinforcement is prewelded with steel spacers so as to allow for maximum concrete coverage.
8. A special silicone sealant is used to lock the caprail in place. This sealant requires special tools for removal.

## Horizontal Board and Batten Concrete Fence

We reserve the right to alter the design or specifications without incurring any obligation, all rights reserved.  
 Fencecrete America, Inc.